

SUPPLIES YOU WILL NEED AT A SHELTER:

- One Gallon of water per person per day (try to store a week's supply)
- Nonperishable food (canned meats, fruits, vegetables, juices, high energy food and comfort foods)
- Special items for infant, elderly, or disabled (formula, diapers, bottles, wipes, heart and blood pressure medication, insulin, extra eye glasses, oxygen tanks)
- First Aid Kit (bandages of various size, gauze, antiseptic wipes, non-latex gloves, adhesive tape, anti-bacterial ointment, cold pack, scissors, tweezers, CPR breathing barrier)
- Supply of prescription drugs and copies of prescriptions
- Non-Prescription drugs (aspirin or pain reliever, antacid, Ipecac, laxative, anti-diarrhea medication)
- Sanitation supplies (toilet paper, towelettes, soap, feminine supplies, disinfectant, hand sanitizer, and bleach)
- Plastic Trash bags
- Sleeping bags or blankets and pillow
- Change of clothing and sturdy shoes
- Rain Gear
- Hat and sunglasses
- Paper products (plates, cups, napkins, plastic utensils)
- Battery powered radio, flashlight, and extra batteries
- Games and books for entertainment

Other Evacuation Transportation:

Hancock County
Emergency Management Agency
228-466-8320

Jackson County Red Cross:
228-762-2455

City of Ocean Springs:
228-769-3111

Important Disaster Numbers

FEMA

1-(800)-621-FEMA (3361)
or online at www.FEMA.gov
Speech/hearing impaired dial
1-(800)-462-7585

SBA

1-(800)-659-2955
1-(800)-877-8339
www.sba.gov/disaster

Salvation Army

Distribution centers may provide food, cleaning supplies, hygiene items, baby items, medical care and other assessed needs.
1-(800)-SAL-ARMY (725-2769)

American Red Cross

1-(866) GET-INFO (438-4636)

Hotlines

Report price gouging, scams, fraud and other hurricane-related crimes.
1-(800)-281-4418

Tax Help

IRS Disaster Assistance Hotline
1-(866)-562-5227
Or visit www.irs.gov

Unemployment Assistance

1-(866)-794-6329
Or www.mdes.ms.gov



Coast Transit Authority Hurricane Evacuation For Harrison County

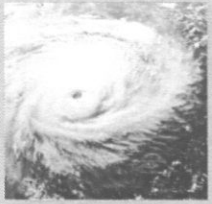
*CTA is prepared
to assist local residents
to evacuate in the
event of a hurricane.*

**CALL (228) 896-8080 ext. 0 or
Go online at www.CoastTransit.com
to Register!**



Coast Transit Authority
333 DeBuys Road
Gulfport, MS 39507

Phone: (228) 896-8080
Fax: (228) 896-8081
www.CoastTransit.com



*National Hurricane
Center Scale of Potential
Wind and Surge
Damage:*

	<i>Winds</i>	<i>Storm Surge</i>
<i>Category 1</i>	<i>74-95 mph</i>	<i>4-5 ft</i>
<i>Category 2</i>	<i>96-110 mph</i>	<i>6-8 ft</i>
<i>Category 3</i>	<i>111-130 mph</i>	<i>9-12 ft</i>
<i>Category 4</i>	<i>131-155 mph</i>	<i>13-18 ft</i>
<i>Category 5</i>	<i>156 + mph</i>	<i>19 + ft</i>

Hurricanes are tropical storms with sustained wind speed of at least 74 mph and may gust to 200 mph. The position of the storm given by the National Hurricane Center is that of the eye of the storm. High winds and heavy rains may extend up to 200 miles from the eye. Hazardous conditions may arrive 6-12 hours before the eye makes landfall.

CTA can help move you out of harms way!

CTA is managing the local Hurricane Evacuation transportation.

Pre-registration is highly recommended.

CTA will provide the following services:

- *Transportation to local shelters*
- *Transportation to local medical facilities*
- *Transportation for persons with pets*



Contact CTA Today at
(228) 896-8080 ext. 0 or
online at www.CoastTransit.com
to register!

Registration is easy. Just answer a few questions which include:

Name, address, phone number, type of transportation required and any special needs that you may have (ex. Medical and/or pet).

When a hurricane threatens the Mississippi Gulf Coast:

Once an Evacuation notice is issued, all persons MUST call CTA at (228) 896-8080 ext. 0 to confirm that they need transportation assistance. Information will be available in Spanish and Vietnamese. CTA will attempt to contact the disabled and elderly who have pre-registered.

**The Following Rules will Apply:
(no exceptions)**

- *Baggage limited to TWO carry on per person (pet carrier counts as one carry on).*
- *Baggage MUST be packed and ready to go at bus arrival.*
- *Non-Ambulatory Persons must have someone with them for assistance, when possible.*
- *Qualified pets (dogs, cats, birds, pocket pets with exception of snakes/lizards) will be transported to the local designated pet shelter. All pets MUST be in pet carrier at bus arrival and accompanied by owner during transport.*

The Harrison County Emergency Management Agency will issue all evacuation notices and instructions. Evacuation Transportation will be available only after an evacuation notice is issued. Transportation will cease to be available at a time that will be determined by the Emergency Management Agency.

Please monitor local media outlets for information.

All residents able to leave the area are strongly encouraged to do so when and evacuation order is issued. Residents should evacuate as early as possible.

BE PREPARED

GATHER DOCUMENTS AND CASH

- *Store important documents such as will, insurance policies, contracts, deeds, property records, family records (birth, marriage, death certificates), passports, Social Security cards, and immunizations records in a bank safe deposit box. (Store copies in a disaster-supplies kit)*
- *Keep a stash of cash or traveler's checks at home where you can quickly get them in case of evacuation.*

MAKE A FAMILY EMERGENCY PLAN

- *Know where the nearest police and fire stations are. Know the route to the nearest hospital emergency room.*
- *Keep Insurance company name and phone numbers in your wallet.*
- *Get a list of neighbors' names and phone numbers. Find out whether any of them have medical or other expertise.*

If you leave the area, you are advised to wait until proper officials have cleared evacuees to return to the area.

CTA will assist in transporting people back to their home from the local shelters.